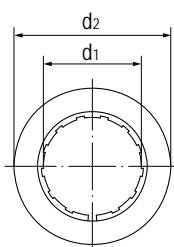
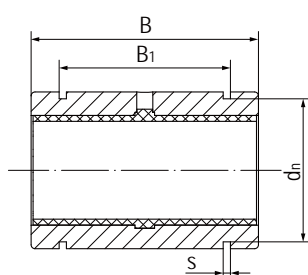


LIN-11R 封闭式直线轴承 Linear bearings, closed



- 封闭式标准长设计
 - 装配LIN-11滑动膜
 - 阳极氧化铝合金适配器
 - 卡簧轴向固定
 - 免维护、低噪音
 - 适用于污垢或灰尘环境
 - 使用温度-50℃/+90℃
- Closed and long design
 - Assembled LIN-11 liners
 - Anodized aluminum adapter
 - Axial secured by circlips
 - Maintenance-free and low noise
 - Resistance to dirt and dust
 - Operation temperature -50℃/+90℃

标准规格 Standard specifications



产品编码 Part No.:

LIN-11R-10

- 内径 Inner diameter
- 封闭式保持器 Closed housing
- LIN-11标准滑动膜
Standard liners LIN-11

座孔 Housing: H7 轴 Shaft: h6-h9

产品编码 Part No.	d ₁ [mm]	公差 Tolerance [mm]	d ₂ h7 [mm]	B h10 [mm]	B ₁ H10 [mm]	d _n h10 [mm]	s H10 [mm]
LIN-11R-06B	6	+0.020/+0.068	12	22	14.2	11.5	1.1
LIN-11R-08B	8	+0.025/+0.083	16	25	16.2	15.2	1.1
LIN-11R-10	10	+0.030/+0.088	19	29	21.6	17.5	1.3
LIN-11R-12	12	+0.030/+0.088	22	32	22.6	20.5	1.3
LIN-11R-16	16	+0.030/+0.088	26	36	24.6	24.2	1.3
LIN-11R-20	20	+0.030/+0.091	32	45	31.2	29.6	1.6
LIN-11R-25	25	+0.030/+0.091	40	58	43.7	36.5	1.85
LIN-11R-30	30	+0.040/+0.110	47	68	51.7	43.5	1.85
LIN-11R-40	40	+0.040/+0.115	62	80	60.3	57.8	2.15
LIN-11R-50	50	+0.050/+0.130	75	100	77.3	70.5	2.65

产品编码 Part No.	轴径 Shaft [mm]	座孔 Housing [mm] H7	公差 Tolerance [mm]	F max. [N] 最大动载荷 Dynamic Load P=5MPa	F max. [N] 最大静载荷 Static Load P=35MPa	重量 Weight [g]
LIN-11R-06B	6	12	0/+0.018	525	3675	5
LIN-11R-08B	8	16	0/+0.018	960	6720	9
LIN-11R-10	10	19	0/+0.021	725	5075	12
LIN-11R-12	12	22	0/+0.021	960	6720	20
LIN-11R-16	16	26	0/+0.021	1440	10080	28
LIN-11R-20	20	32	0/+0.025	2250	15750	50
LIN-11R-25	25	40	0/+0.025	3625	25375	104
LIN-11R-30	30	47	0/+0.025	5100	35700	163
LIN-11R-40	40	62	0/+0.030	8000	56000	341
LIN-11R-50	50	75	0/+0.030	9000	87500	589